

TALENT ADVISORY SERVICES

Playbook: Productivity with Generative AI

At Talent Advisory Services, our AI for Employee Effectiveness solutions focus on leveraging Generative AI to automate administrative tasks, tailor learning and development pathways, and enhance decision-making, ultimately boosting employee productivity and enabling smarter, more effective teams.



The Importance of GenAI

Automate routine and repetitive tasks, allowing employees to focus on higher-value, strategic work.

Automating Routine Workflows

Leverage GenAI to streamline repetitive tasks freeing up employees to focus on high-impact activities.

Personalized Learning and Development

Design AI-driven learning programs that analyze skill gaps and offer tailored learning paths for employees.

AI-Enhanced Decision-Making and Innovation

Integrate GenAI tools for real-time data analytics and predictive insights, improving decision-making accuracy and speeding up innovation.

Productivity with Generative AI Services



Partner With Us

Jeff Giacomponello

Talent Advisory Services

215.828.0580

TalentAdvisory@outlook.com

HRTalentAdvisors.com

AI-Powered Talent Acquisition

Service: Use GenAI to enhance and streamline the recruitment process. This service automates candidate screening, resume parsing, and matching job applicants with the best-fit roles based on skill assessments and experience.

How It Works: AI can analyze vast pools of candidate data, using algorithms to predict cultural fit and future performance. AI-powered chatbots can handle initial candidate inquiries and schedule interviews, saving time for HR teams.



Personalized Employee Learning and Development

Service: Implement AI-driven personalized learning pathways for employees, tailored to their skills, roles, and career aspirations. This service identifies individual skill gaps and recommends targeted training modules.

How It Works: AI can continuously monitor employee performance and engagement, adjusting learning recommendations in real-time to suit changing needs. Micro-learning modules delivered via AI can boost knowledge retention and engagement.



AI-Enhanced Performance Management

Service: Leverage AI tools to analyze employee performance data, provide real-time feedback, and create objective, data-driven performance reviews.

How It Works: AI tools can analyze an employee's historical performance data and compare it to key performance indicators (KPIs) across the company. These insights allow for more accurate and unbiased evaluations, promoting fairness and reducing human bias in performance assessments.



Skill and Career Development **Services**

TALENT ADVISORY SERVICES

Automating Routine HR Tasks

Service: Utilize GenAI to automate administrative HR tasks such as payroll processing, employee onboarding, document generation, and scheduling. This reduces the burden on HR staff, allowing them to focus on more strategic work.

How It Works: AI-powered systems can handle routine documentation, scheduling interviews, generating reports, and even managing employee inquiries through chatbots.



Predictive Workforce Analytics

Service: Provide AI-driven workforce analytics services to forecast staffing needs, employee turnover, and team performance. These insights help organizations plan better for the future and address workforce challenges proactively.

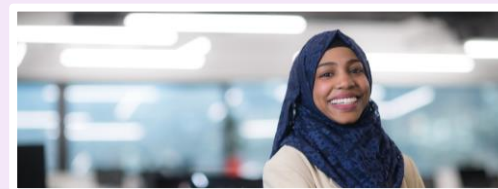
How It Works: GenAI analyzes historical data to predict workforce trends such as potential resignations, employee dissatisfaction, or skill shortages. It also identifies high-potential employees for succession planning.



Enhancing Collaboration and Team Productivity

Service: Offer AI-powered collaboration tools that automate project management, streamline task assignments, and provide real-time updates on team progress. This service ensures better team coordination and higher productivity.

How It Works: AI systems can track project milestones, generate automatic updates, and assign tasks based on employee strengths and workloads. It also facilitates instant access to shared data and reports.



Diversity, Equity, and Inclusion (DEI) Analytics

Service: Use GenAI to enhance DEI initiatives by analyzing workforce diversity data and providing actionable insights to create a more inclusive workplace.

How It Works: AI tools assess diversity metrics across the organization, highlight areas for improvement, and track the effectiveness of DEI programs over time. It can also mitigate unconscious bias in hiring and promotions by providing data-driven recommendations.



TALENT ADVISORY SERVICES

Playbook: Productivity with Generative AI



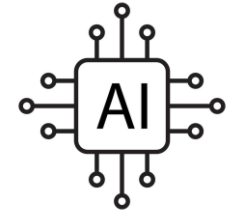
GET TO KNOW ▼

Productivity with Generative AI

- Unlocking Productivity with Generative AI
- Automating Routine Tasks with GenAI
- AI-Driven Business Insights
- AI-Driven Learning for Employees

Unlocking Productivity with Generative AI

Generative AI (GenAI) is rapidly transforming industries by automating complex tasks, enhancing decision-making, and enabling more creative and personalized outputs.



Unlike traditional AI, which analyzes data to support tasks, GenAI actively generates new content, driving productivity across multiple domains such as marketing, customer service, research & development, and human resources.

What is GenAI:

GenAI refers to AI technologies that go beyond data analysis to generate new content (text, images, code, etc.), making them powerful tools for both creative and operational tasks.

Why it's Important:

GenAI allows companies to shift from reactive to proactive strategies by automating complex processes, driving innovation, and improving decision-making.

Industry Impact:

According to McKinsey, businesses across various industries are projected to see \$2.6 trillion to \$4.4 trillion in annual productivity gains from GenAI applications.

Best Practices for Implementing GenAI

- **Start Small, Scale Fast:** Companies should begin with pilot projects in areas like customer service or marketing before scaling AI applications across the enterprise.
- **Focus on Collaboration:** Ensure human-AI collaboration rather than replacement. Employees should work alongside AI tools to enhance, not replace, their capabilities.
- **Invest in AI Training:** Equip employees with the knowledge to understand and leverage AI tools effectively. This can be achieved through training programs and collaborative AI development efforts.

Automating Tasks with GenAI

Key Applications of Generative AI for Productivity

- Streamlining Operations: GenAI can automate routine tasks such as data entry, content generation, and scheduling. For instance, AI tools like ChatGPT handle customer inquiries, while AI assistants automate workflow management.
- Benefit: Employees save significant time, allowing them to focus on higher-value tasks like strategy and innovation.



Routine Automation

GenAI automates low-value, repetitive tasks like data entry, scheduling, and document drafting. This allows employees to shift focus to higher-impact, strategic tasks.

Efficiency Gains

Deloitte reports that companies leveraging GenAI for operational tasks, such as supply chain functions, have seen notable improvements in operational flow and reduced bottlenecks.

Human Oversight:

While GenAI excels at automating routine tasks, complex and multi-step processes still require human oversight for optimal results.

Impact on Engagement:

By 2025, more than 30% of outbound marketing content will be synthetically generated by AI, enabling businesses to scale personalized interactions with minimal manual intervention

Best Practices for Implementing GenAI

- **Start Small, Scale Fast:** Companies should begin with pilot projects in areas like customer service or marketing before scaling AI applications across the enterprise.
- **Focus on Collaboration:** Ensure human-AI collaboration rather than replacement. Employees should work alongside AI tools to enhance, not replace, their capabilities.
- **Invest in AI Training:** Equip employees with the knowledge to understand and leverage AI tools effectively. This can be achieved through training programs and collaborative AI development efforts.

Improving Decision-Making with AI-Driven Insights

Enhanced Decision-Making

- **Data-Driven Insights:** GenAI uses large datasets to provide real-time predictive analytics, helping businesses make informed decisions faster. For instance, AI-driven insights can predict customer behaviors, market trends, and operational bottlenecks.
- **Benefit:** Improves accuracy in strategic decision-making by providing data-driven insights faster than manual analysis.



Data Processing

GenAI's ability to process and analyze large datasets in real-time allows companies to make faster, more accurate decisions.

Predictive Analytics

GenAI tools help forecast trends, predict customer behaviors, and monitor market shifts, giving companies a competitive edge by allowing them to act on insights more quickly.

Business Impact:

Deloitte highlights that companies using AI-driven decision-making tools experience 30% faster decision-making, leading to more agile and responsive business operations.

AI-Driven Learning for Employees

Personalized Employee Experiences: Personalization at Scale: AI-powered chatbots and recommendation engines generate hyper-personalized interactions, enhancing customer service and marketing. Similarly, employee learning platforms powered by GenAI deliver personalized career development plans.

Impact: Companies using AI-driven learning solutions report higher employee engagement and skill acquisition, leading to improved performance and career growth.

Benefit: Companies can engage customers and employees more effectively, boosting satisfaction and loyalty.

Personalized Learning:

GenAI can analyze individual employees' skill gaps and offer tailored learning paths, ensuring that development efforts are aligned with both employee needs and company goals.

Micro-Learning:

AI-driven platforms can deliver bite-sized learning modules that employees can access on-demand, increasing retention and engagement by delivering the right training at the right time.

Compliance Training:

GenAI generates real-time compliance training materials that adapt to specific regulations, ensuring employees stay updated on industry standards.

